



ATS KABANA HIGH



## LOCATION OF SITE:

PLOT NO. – C-01,  
SECTOR -04, GREATER NOIDA,  
UTTAR PRADESH





## LOCATION OF SITE:



# SITE PLAN:

PLOT AREA  
= 10,000 SQ.MT.

TOTAL SALEABLE AREA  
= 5,00,000 SQ.FT.

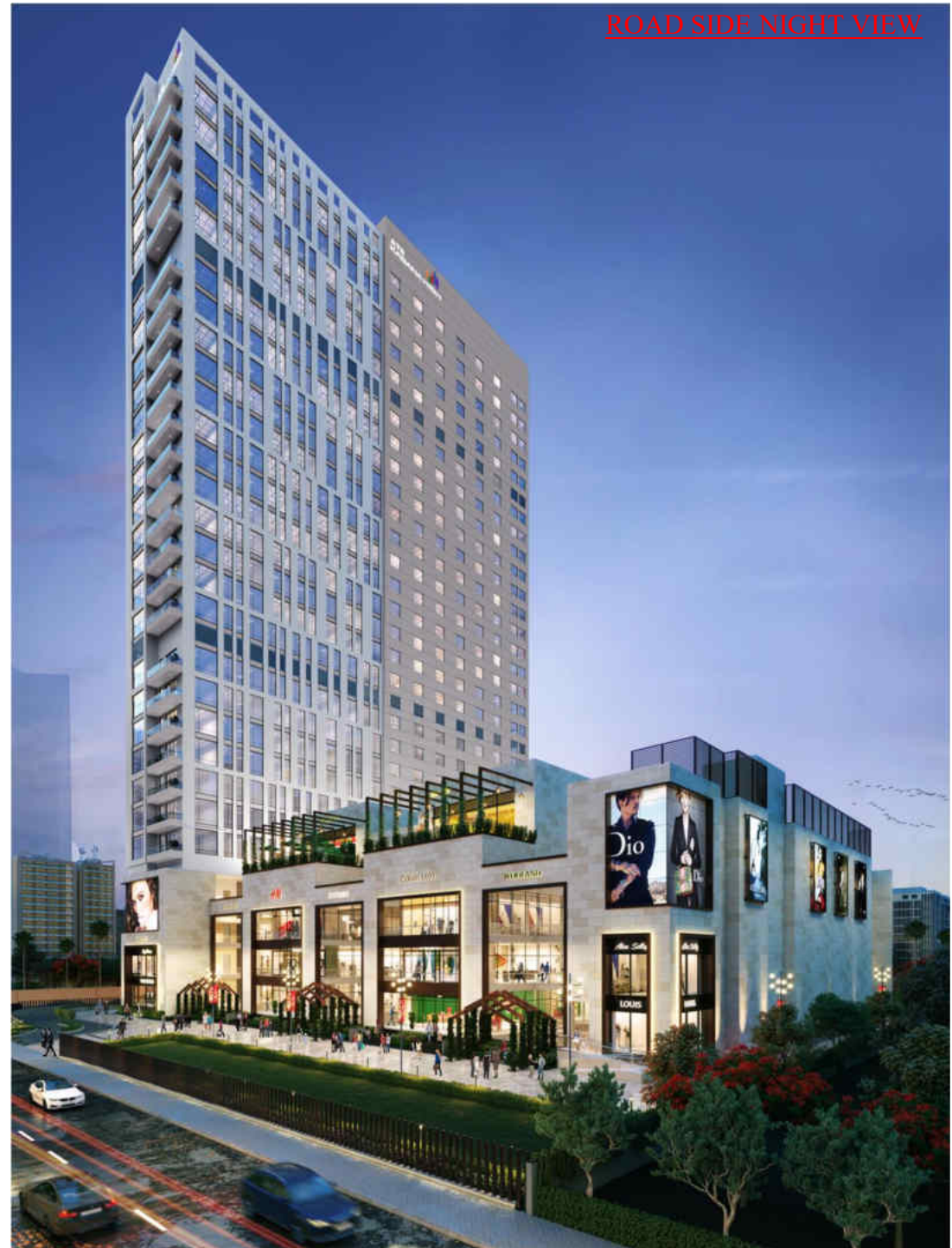




## VIEWS:

NO. OF FLOOR = 2 NOS. BASEMENT+ LOWER GROUND FLOOR+UPPER GROUND FLOOR + 1<sup>ST</sup> TO 29<sup>TH</sup> FLOOR

- HYPERMARKET IS AT UPPER BASEMENT LVL.
- RETAIL SHOPS FROM LOWER GROUND FLOOR TO 2<sup>ND</sup> FLOOR
- RETAIL SHOPS, FOOD-COURT & CINEMA AT 3<sup>RD</sup> FLOOR LVL.
- RESTAURANTS / PUB AT 4<sup>TH</sup> FLOOR LVL.
- OFFICES FROM 5<sup>TH</sup> TO 29<sup>TH</sup> FLOOR LVL.



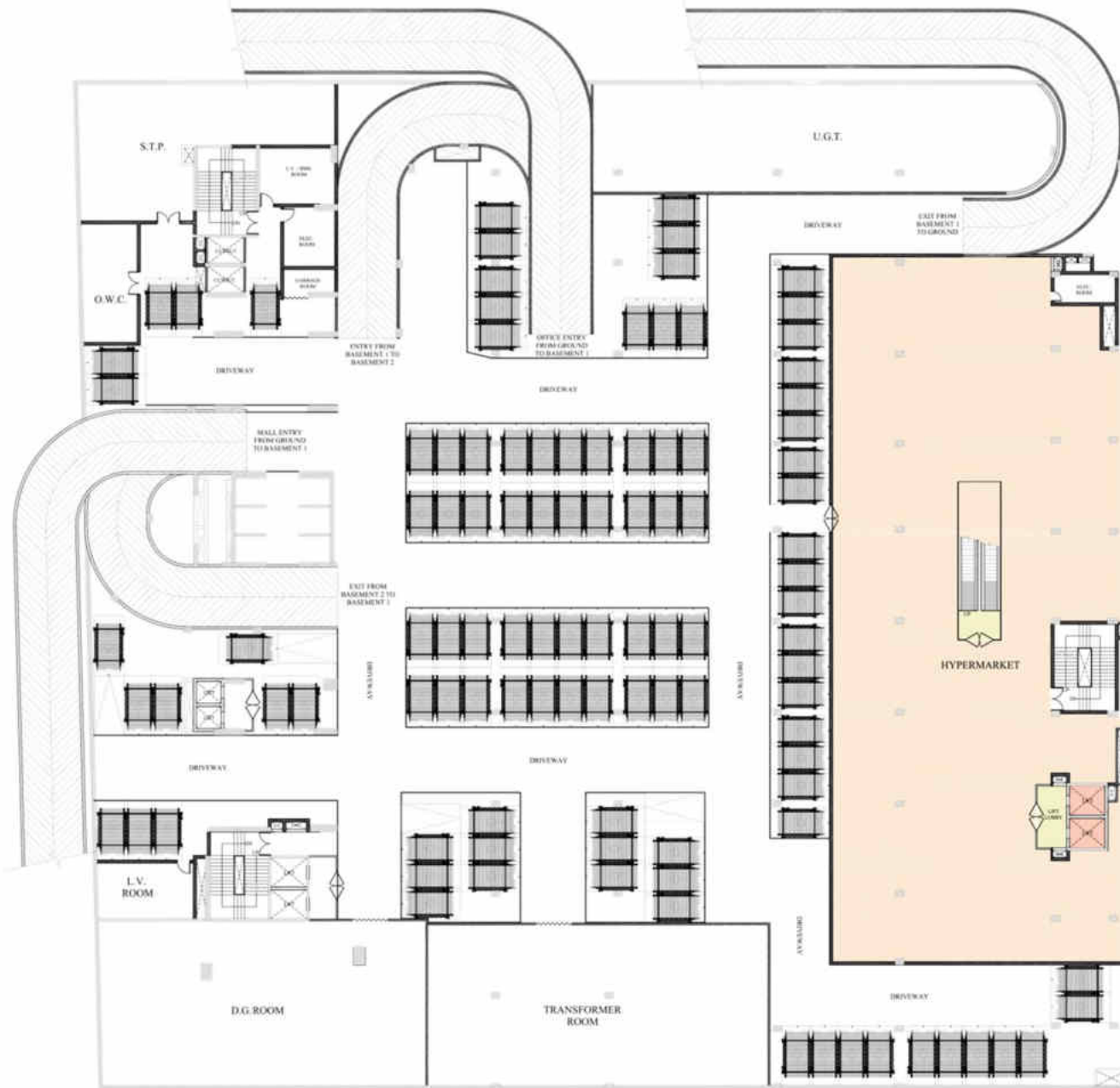
ROAD SIDE EVENING VIEW

VIEWS:





# UPPER BASEMENT PLAN:



HYPER MARKET  
SALEABLE AREA = 18936 SQ.FT.



# LOWER GROUND FLOOR PLAN:



NUMBER OF SHOPS = 82  
SALEABLE AREA = 47692 SQ.FT.





# UPPER GROUND FLOOR PLAN:



NUMBER OF SHOPS = 74  
 SALEABLE AREA = 32177 SQ.FT.



# FIRST FLOOR PLAN:



NUMBER OF SHOPS = 76  
SALABLE AREA = 34306 SQ.FT.





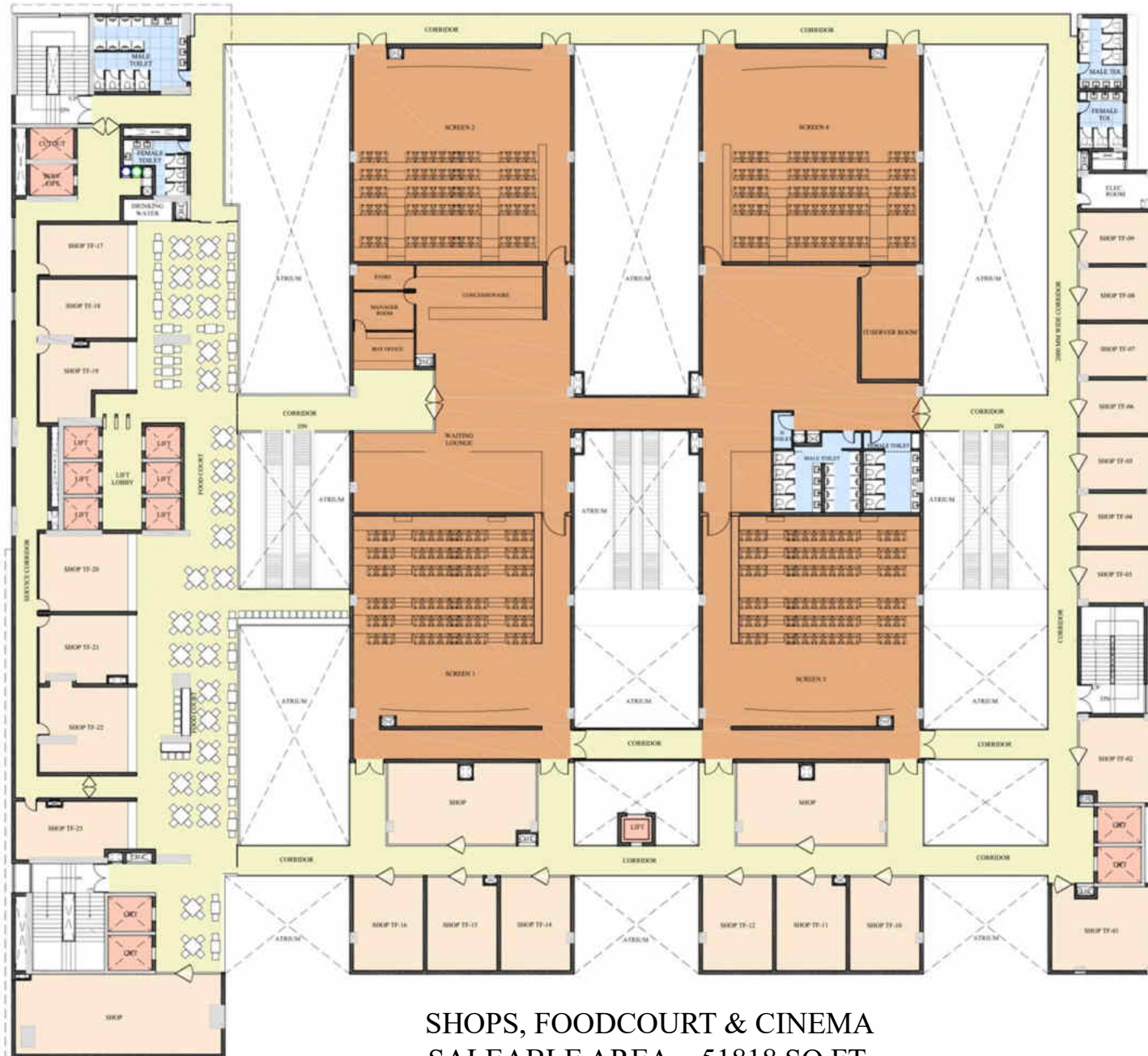
# SECOND FLOOR PLAN:



NUMBER OF SHOPS = 78  
 SALEABLE AREA = 36352 SQ.FT.



# THIRD FLOOR PLAN:



SHOPS, FOODCOURT & CINEMA  
SALEABLE AREA = 51818 SQ.FT.



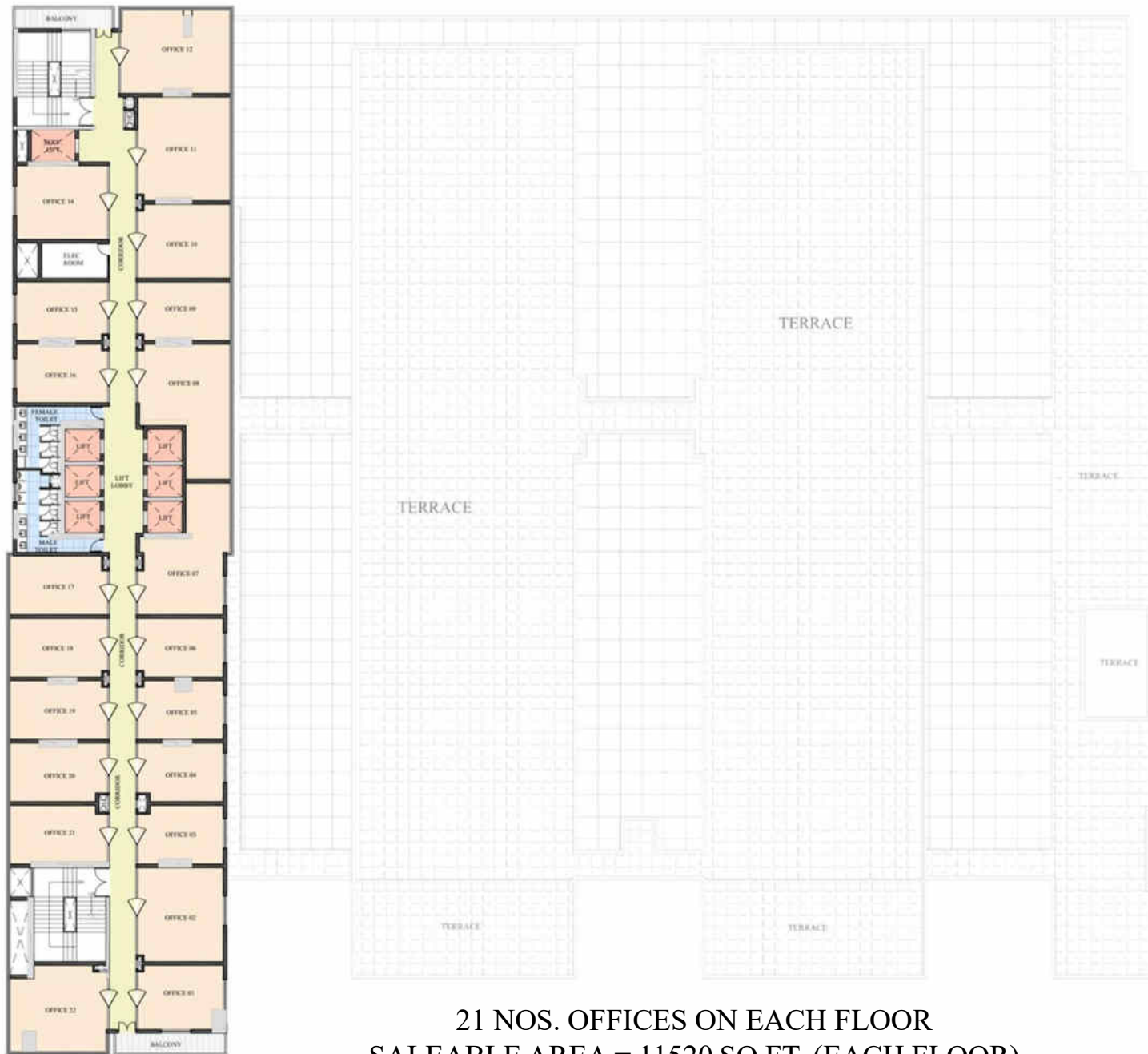


# FOURTH FLOOR PLAN:



2 NOS. RESTAURANT / PUB  
SALEABLE AREA = 5854 SQ.FT.

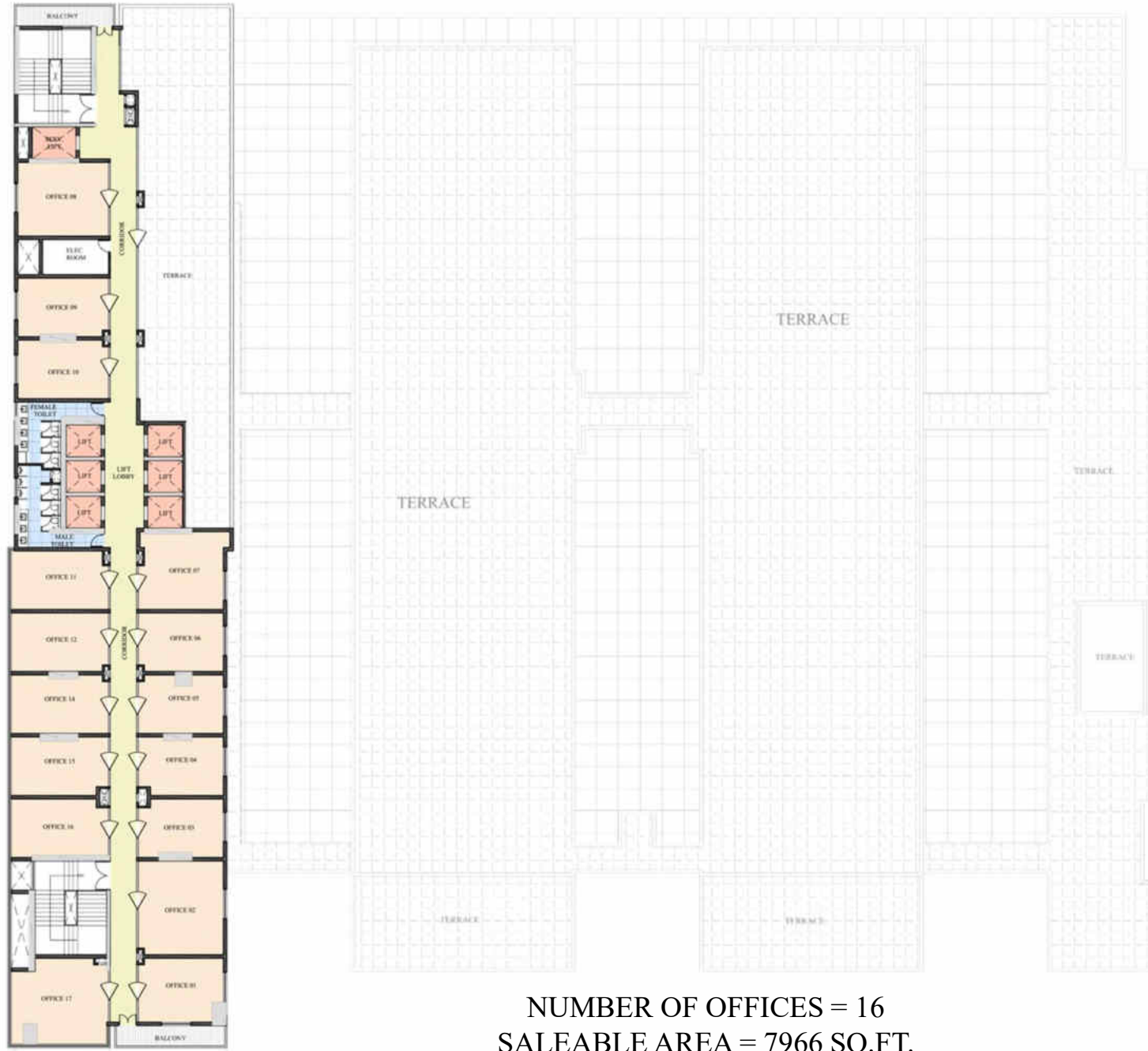
# 5<sup>TH</sup> TO 28<sup>TH</sup> FLOOR PLAN:



21 NOS. OFFICES ON EACH FLOOR  
SALEABLE AREA = 11520 SQ.FT. (EACH FLOOR)



# 29<sup>TH</sup> FLOOR PLAN:



NUMBER OF OFFICES = 16  
SALEABLE AREA = 7966 SQ.FT.



VIEWS:





VIEWS:



SHOP CLOSE-UP VIEW



VIEWS:



SHOP CLOSE-UP VIEW

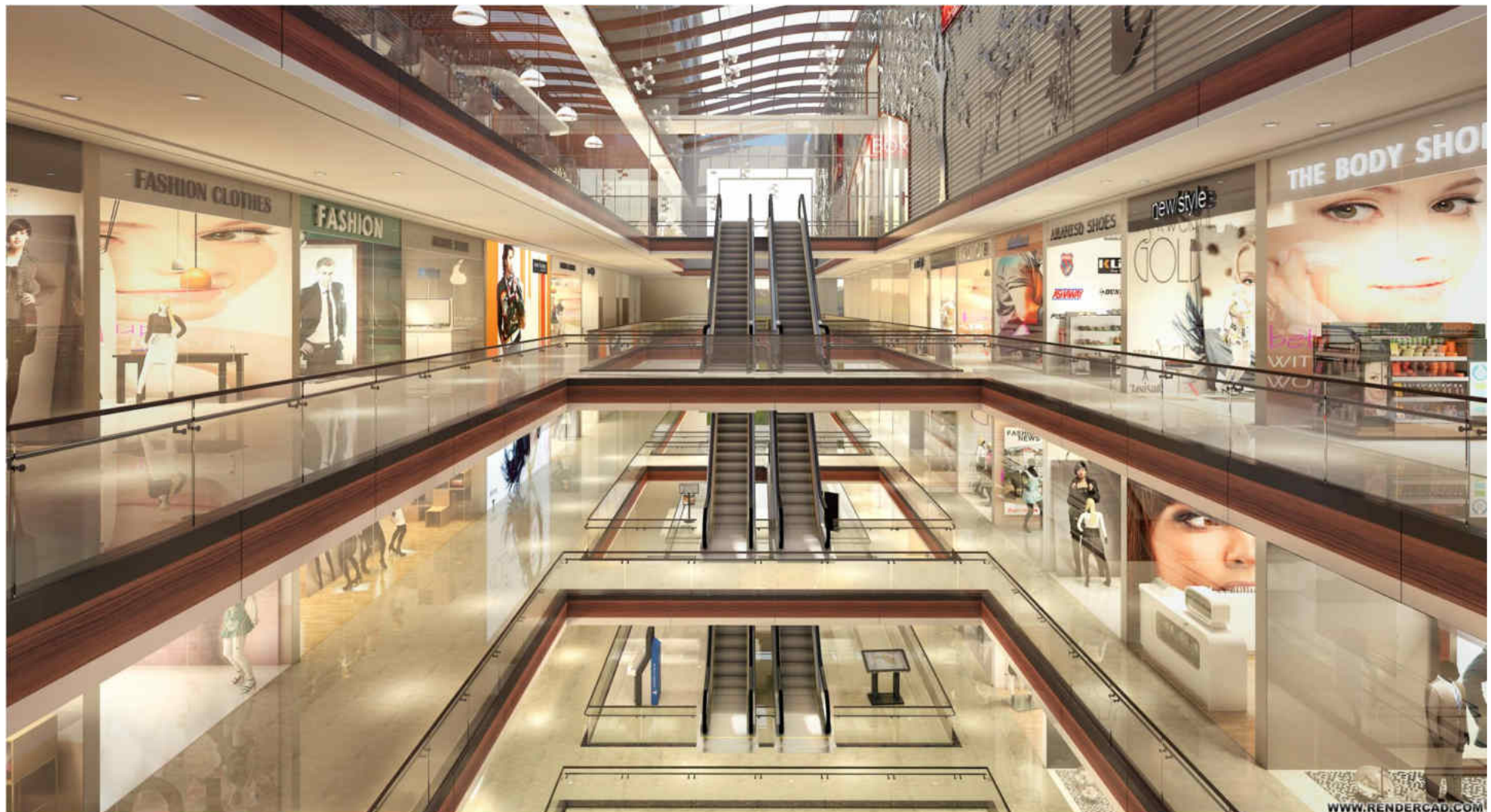


VIEWS:



FOOD COURT

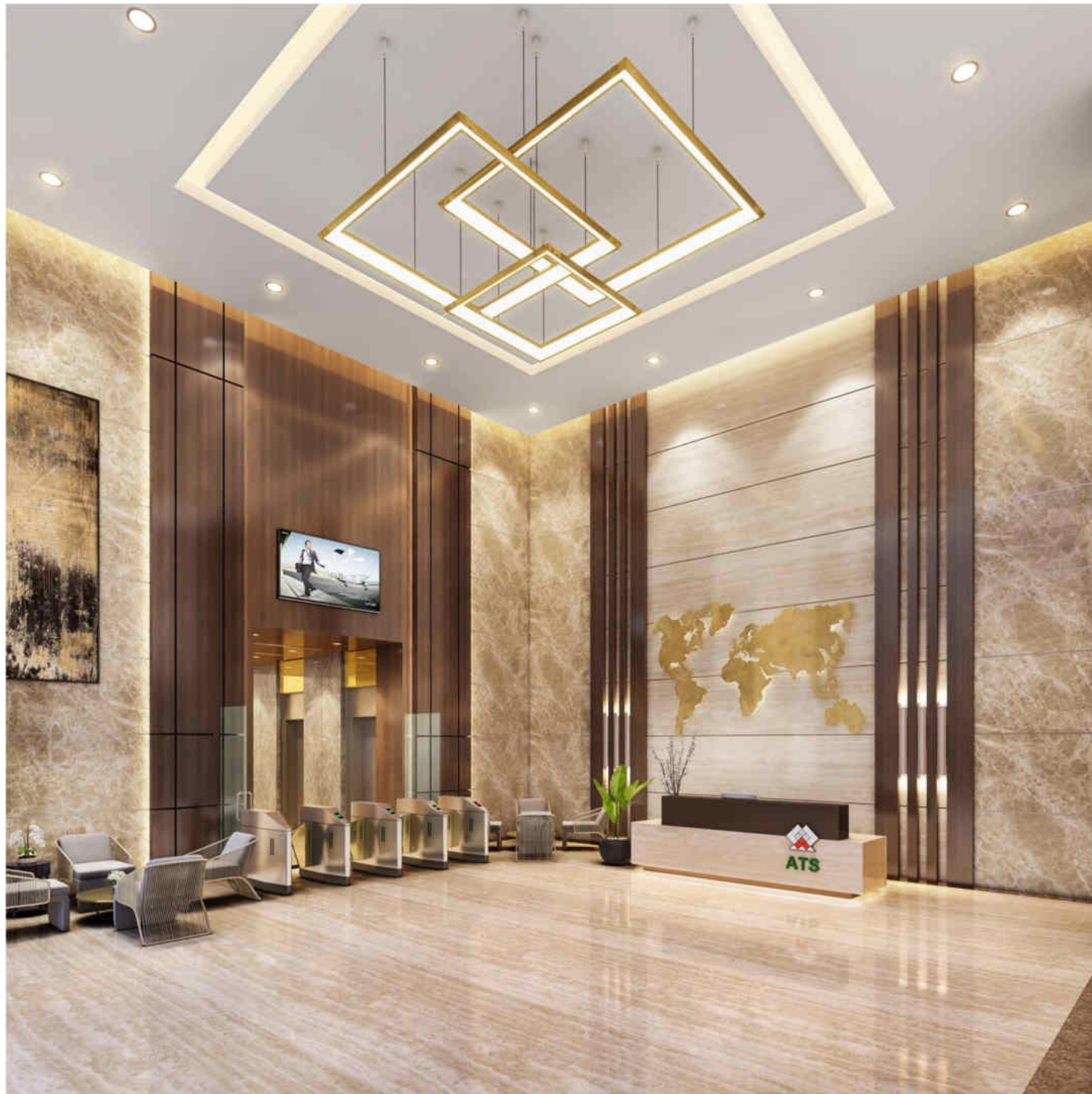
VIEWS:



ATRIUM & CORRIDORS



VIEWS:



DOUBLE HEIGHT  
OFFICE ENTRANCE  
LOBBY